

Disaster Recovery

All client data is stored on FIN servers. Our clients maintain full control of this data which is downloadable at anytime.

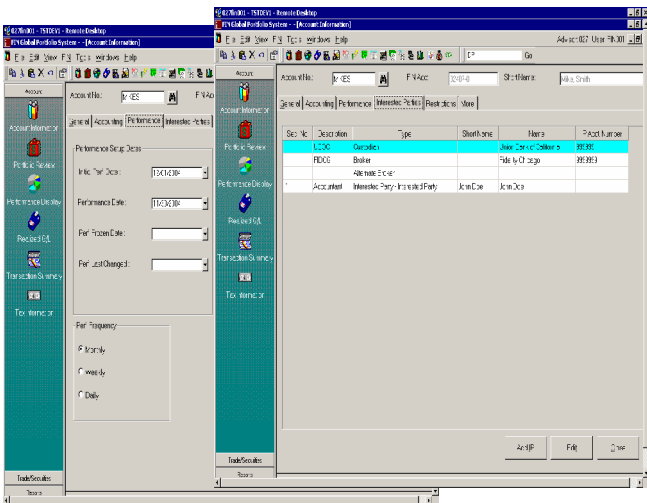
These servers are replicated at a hot site and all data is backed up and stored at a secured storage facility. We also provide our clients with two disaster recovery

locations with terminals in case of an emergency.

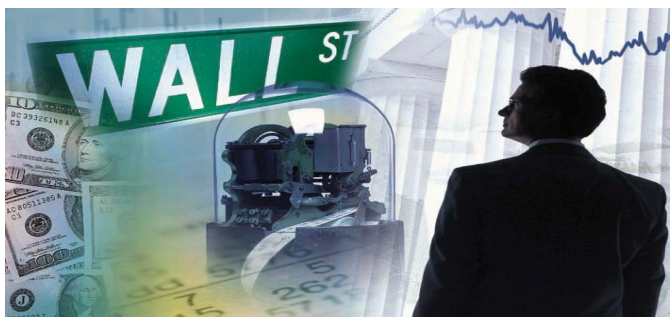
Technology

FIN uses a Windows2000 advanced operating system. The databases are both SQL and proprietary data structures.

The Windows interfaces are user-friendly and allow clients to easily perform tasks. FIN is accessible from remote locations and is available 24 hours a day seven days a week.



Financial Information Network, Inc.

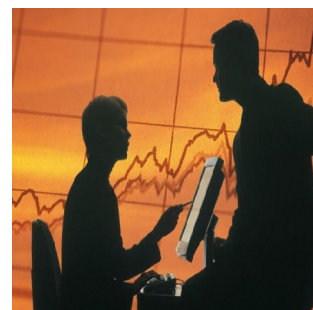


Our Mission

Since 1969, we have been committed to providing our clients a wide array of product features and services. As the industry dynamics and regulations have changed over the years, we've continued to adjust and improve with them to better serve our client's needs.

From our experiences we have continued to develop a wide range of features providing our clients the necessary tools to streamline their businesses. Some of these tools are designed to handle complex investment accounting needs, automate processing, manage compliance requirements and streamline day-to-day processes.

Our associates have extensive programming and investment experience giving us the reputation for having excellent customer service and unparalleled system flexibility.



Financial Information Network, Inc.

P.O. Box 7954

Van Nuys, California 91409-7954

(818) 782-0331

www.fingps.com

*Providing Investment
Management Solutions Since 1969*

FIN[®]

**THE PORTFOLIO MANAGEMENT
SYSTEM OFFERING INTUITIVE,
FASTER SOLUTIONS FOR
FINANCIAL PROFESSIONALS**



Financial Information Network, Inc.

P.O. Box 7954

Van Nuys, California 91409-7954

(818) 782-0331

www.fingps.com

About Our Firm

We are an application service provider (ASP) helping portfolio managers and investment advisors grow their business. FIN offers a scalable and flexible user-friendly global portfolio management system for separately managed account, high-net-worth individuals and institutional professionals. Located 20 miles north of Los Angeles



Airport we have been in the business for more than 35 years.

Our experience and knowledge is unsurpassed and we take great pride in our flexibility, customer service and software customization for our clients.

Portfolio Management & Trading

We offer managers the ability to conduct portfolio analysis, generate what-if-analysis and execute trades. Our real-time trading system is front-end compliant and provides managers an automated way to generate orders and allocations.

Our multi-currency system supports all countries and currencies. Clients can easily view or generate portfolios in a local or base currency.



Reporting

We have developed hundreds of internal reports over the years. To simplify the reporting function,

SECURITY	# SHARES	SECURITY	PRICE	MARKET VALUE	AVG COST	ACQ. DATE	QTY.	%	%	PERF	COMPLY	SORTING
1. PACIFIC LIGHTING CORP	196,200	60.50	\$9,912,150	\$4.01	77	6.89	160.22	4.89	4.89	4.89	P17	X
2. PERISCO INCORPORATED	80,250	41.87	\$3,380,940	\$20.13	26	1.26	108.59	1.66	1.66	6.59	P17	X
3. AMERICAN TEL & TELCO CO	50,177	66.90	\$3,388,950	\$47.02	87	2.24	10.14	1.02	1.02	6.02	7	X
4. BRISTOL-MYERS SQUIBB CO.	50,416	66.75	\$3,385,787	\$49.19	88	5.07	15.87	1.47	1.47	6.48	BNY	X
5. BRISTOL-MYERS SQUIBB CO.	512,458	66.75	\$3,418,150	66.75	100	1.00	1.00	1.00	1.00	1.00	BNY	X

TO #	ACCT #	SECUR NAME	DATE	OWNED	01-31-99	12-31-99	11-30-99	10-31-99	09-30-99	08-31-99	07-31-99	06-30-99	05-31-99
1	174	CHARLSTON SET			-6.00%	-0.4%	-0.3%	-4.40%	-7.0%	-1.7%	3.00%	2.0%	2.0%
2	170	AUTO RACING TEAM			-4.96%	-0.6%	-1.99%	-7.7%	-2.0%	-1.0%	8.95%	-1.67%	0.0%
3	312	BOOTH BELLS	06-18-00		-1.54%	-0.1%	0.0%	-0.2%	2.04%	-4.0%	0.04%	1.24%	2.40%
4	322	BIARD DRUG CO	10-10-90		-6.00%	-7.8%	-4.8%	-1.4%	2.2%	1.0%	4.0%	-2.7%	0.0%
5	324	BOOTH INDOENT	10-10-90		-1.92%	-1.99%	1.17%	7.6%	1.44%	-1.0%	2.40%	2.22%	2.40%
6	322	BIARD DRUG CO			-4.00%	-7.0%	-1.7%	-1.6%	2.0%	1.0%	4.0%	-2.7%	0.0%
7	248	BOOTH FSP			-2.87%	-7.0%	1.79%	-1.0%	1.24%	-1.0%	3.55%	1.90%	2.52%
8	248	BOOTH INC	04-21-99		-0.7%	1.00%	1.12%	1.00%	0.2%	-0.0%	2.15%	2.90%	-4.7%
9	390	BOOTH FAMILY	06-24-07		-4.7%	4.4%	1.05%	1.49%	0.6%	-1.16%	1.09%	2.42%	2.32%
10	391	BOOTH FSP	N/A	N/A	N/A	N/A	N/A	N/A	N/A	N/A	N/A	N/A	N/A
11	402	REPERION INT	11-17-97		-6.40%	-0.8%	2.82%	-1.29%	2.77%	0.7%	6.75%	6.0%	6.23%
12	406	BAUYER			-5.70%	-0.5%	1.72%	-1.29%	2.10%	1.06%	7.60%	-0.41%	6.10%
13	602	BIARD DRUG CO. SFP			1.02%	-0.7%	-1.05%	-1.44%	-0.7%	-0.6%	-0.7%	1.05%	-1.04%

MARK TOTALS	MARKET VALUE AS OF 01-31-99	MARKET VALUE AS OF 12-31-99	MARKET VALUE AS OF 11-30-99	MARKET VALUE AS OF 10-31-99	MARKET VALUE AS OF 09-30-99	MARKET VALUE AS OF 08-31-99	MARKET VALUE AS OF 07-31-99	MARKET VALUE AS OF 06-30-99	MARKET VALUE AS OF 05-31-99
MARKET VALUE AS OF 01-31-99	13,028,909.02								
MARKET VALUE AS OF 12-31-99	12,592,776.88								
MARKET VALUE AS OF 07-31-99	12,979,956.02								
MARKET VALUE AS OF 04-30-99	10,979,956.08								

NET OF MANAGEMENT FEES	ACCOUNT WEIGHTED AVERAGES	DOLLAR WEIGHTED AVERAGES	GROSS OF MANAGEMENT FEES	ACCOUNT WEIGHTED AVERAGES	DOLLAR WEIGHTED AVERAGES
ACCOUNT WEIGHTED AVERAGES	-0.25%	-0.28%	1.11%	-0.7%	1.02%
DOLLAR WEIGHTED AVERAGES	-0.25%	-0.28%	0.7%	-0.7%	1.05%
ACCOUNT WEIGHTED AVERAGES	-0.25%	-0.28%	1.11%	-0.7%	1.02%
DOLLAR WEIGHTED AVERAGES	-0.25%	-0.28%	0.7%	-0.7%	1.05%

we offer batch processing and web based reporting to further automate report generation and lower costs. In addition, customized client statements are available and can be setup to include manager commentaries, asset allocation graphics and additional programming as needed.

Management Fee Processing

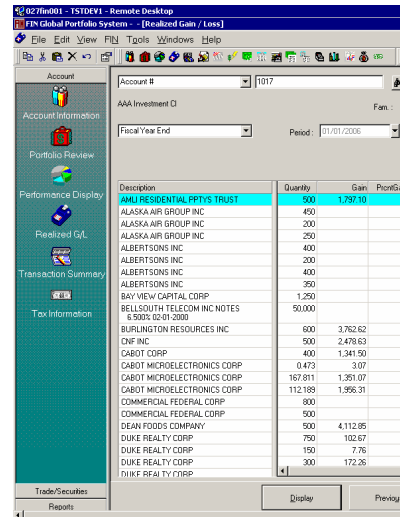
FIN furnishes tremendous flexibility in processing management fees. Each account's billing setup can be unique. Customized fee schedules can be established along with bill processing in advance or in arrears. Additionally, specific assets within an account can be excluded from the billable value or have different fee schedules all together.



User-Friendly

FIN is a user-friendly, GUI system that includes all capabilities needed to effectively manage vast numbers of accounts. Our electronic interfaces provide connections between numerous brokers and custodians allowing managers to see real-time results.

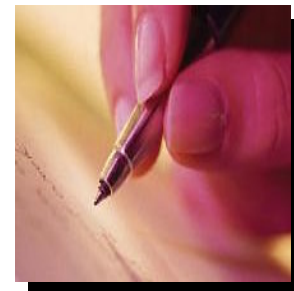
The system makes it simple for users to maintain contact information, place trades, conform to compliance guidelines and so much more.



Trading & Securities Settlement

FIN has an interface with OMGEO OASYS and Trade Hub allowing users to send allocations to brokers. Some of the features we offer include model rebalancing, block trading, electronic interface, securities swaps and more.

Our DTC interface pulls in confirmations, matches them to transactions and then affirms and archives the data. If we don't have a particular interface with a custodian or third party vendor we will build the interface.



Financial Information Network, Inc.

(818) 782-0331

www.fingps.com